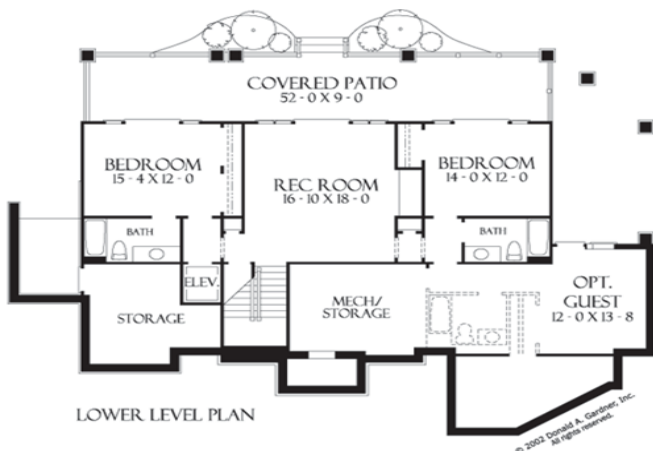
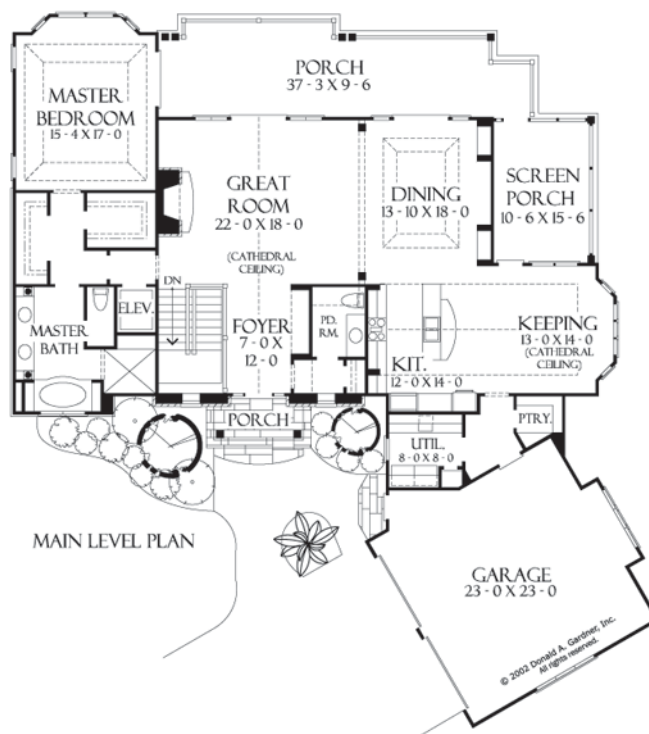


# Dogwood Ridge By Currahee Home Builders

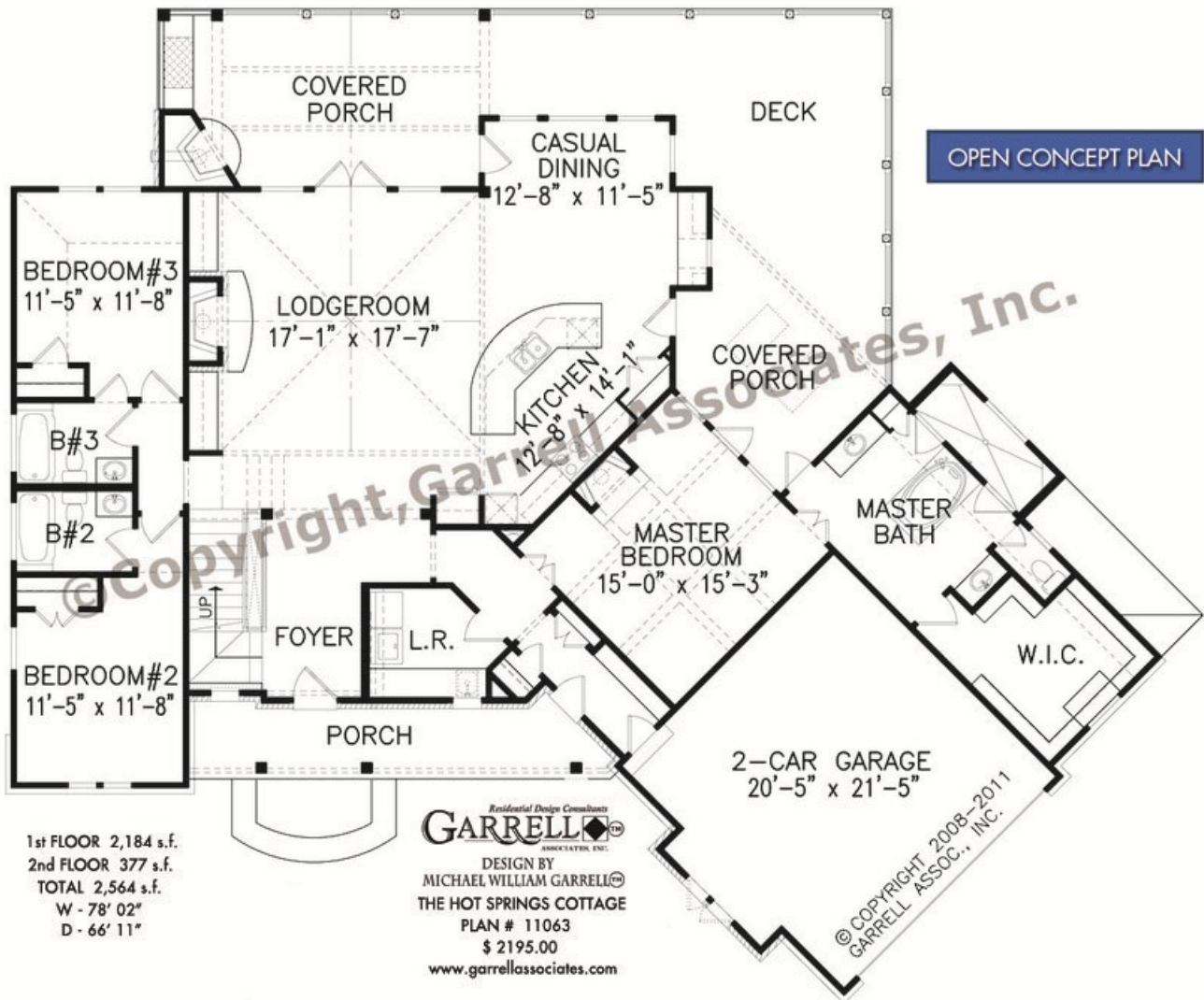


1st Floor: 2084 Sq. Ft.  
Basement: 1111 Sq. Ft.



Starting at \$599,900

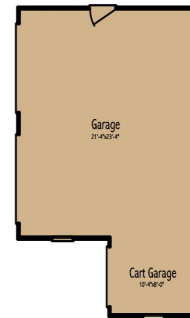
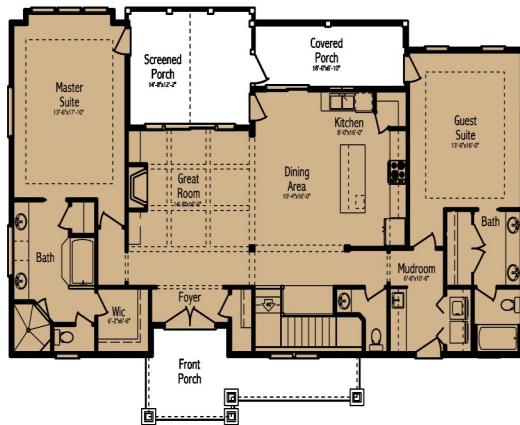
# Hot Springs By Currahee Home Builders



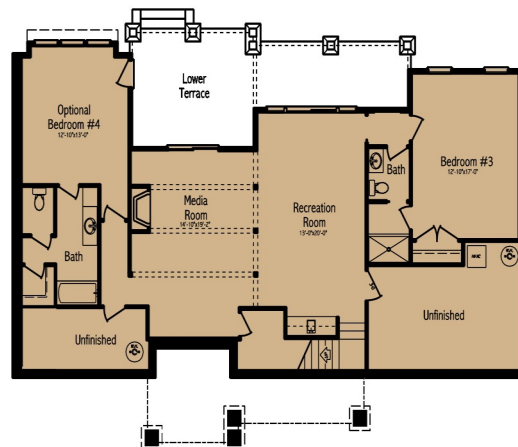
Starting at \$529,900



# Cherokee Rose by Currahee Home Builders



MAIN LIVING	1819
BASEMENT LIVING	1343
TOTAL LIVING	3194
GARAGE	616
FRONT PORCH	160
REAR PORCH	305
LOWER TERRACE	309
BASEMENT UNFINISHED	345
TOTAL UNDER ROOF	4961



  
**Currahee**  
**Home Builders**

Mike Elrod  
 706-763-7377

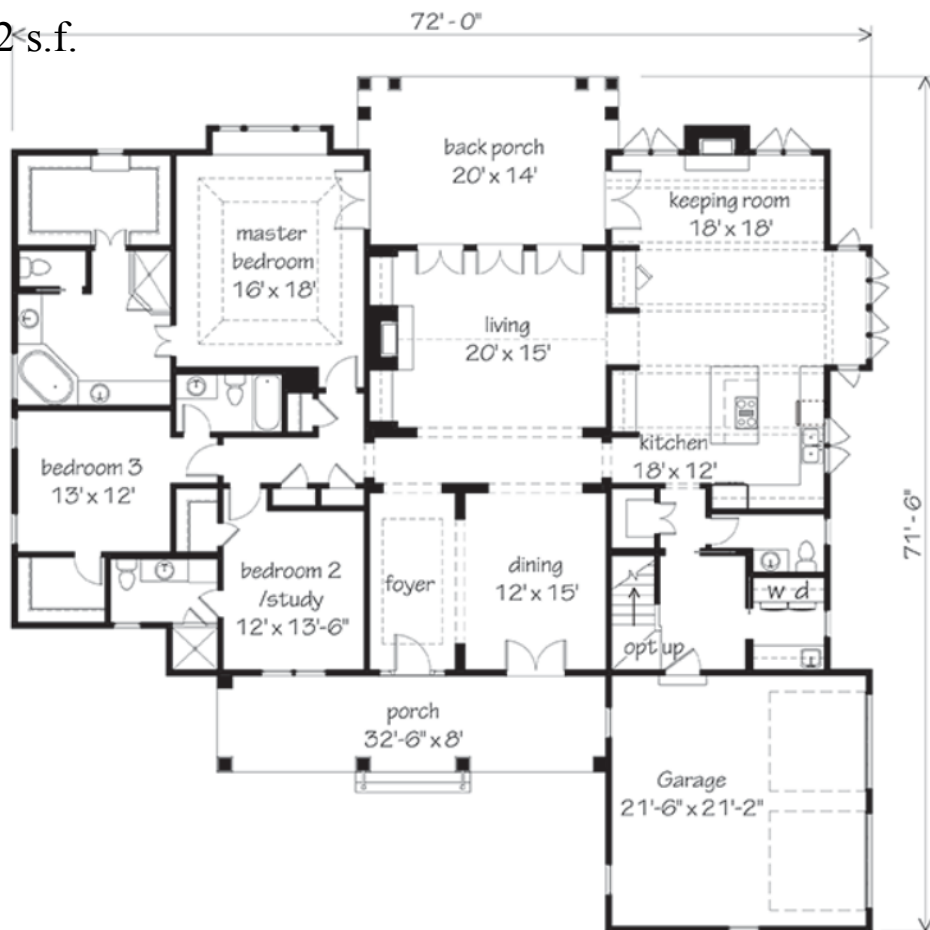
mike@curraheehomebuilders.com  
 www.curraheehomebuilders.com

**Starting at 619,900**

## Canebrake by Currahee Home Builders



2872 s.f.



Starting at \$499,900

## Retreat by Currahee Home Builders



**Main Level – 1652 s.f.**

**Lower Terrace – 1106 s.f.**

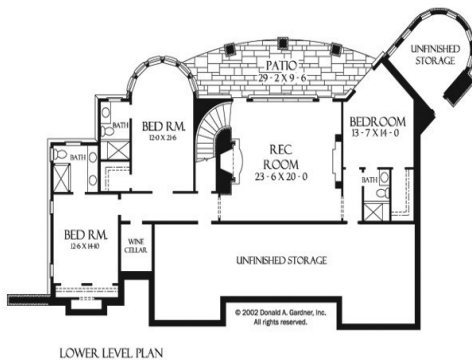
**Starting at \$569,900**



# Cherokee Crest by Currahee Home Builders

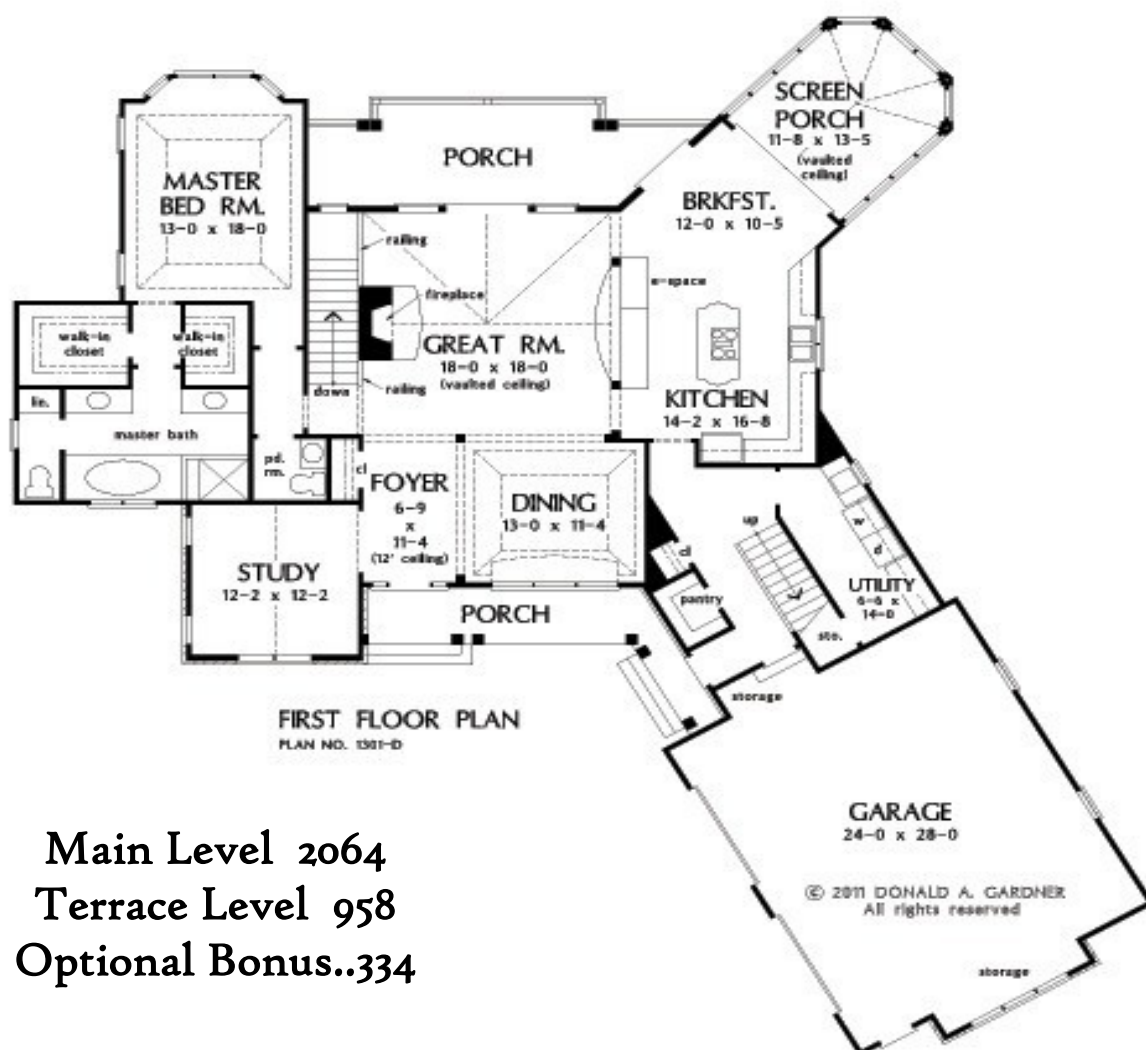


**1<sup>st</sup> Floor 2537 s.f.  
Lower Terrace**



**Starting at \$799,900**

# Chatsworth



Main Level 2064  
Terrace Level 958  
Optional Bonus..334

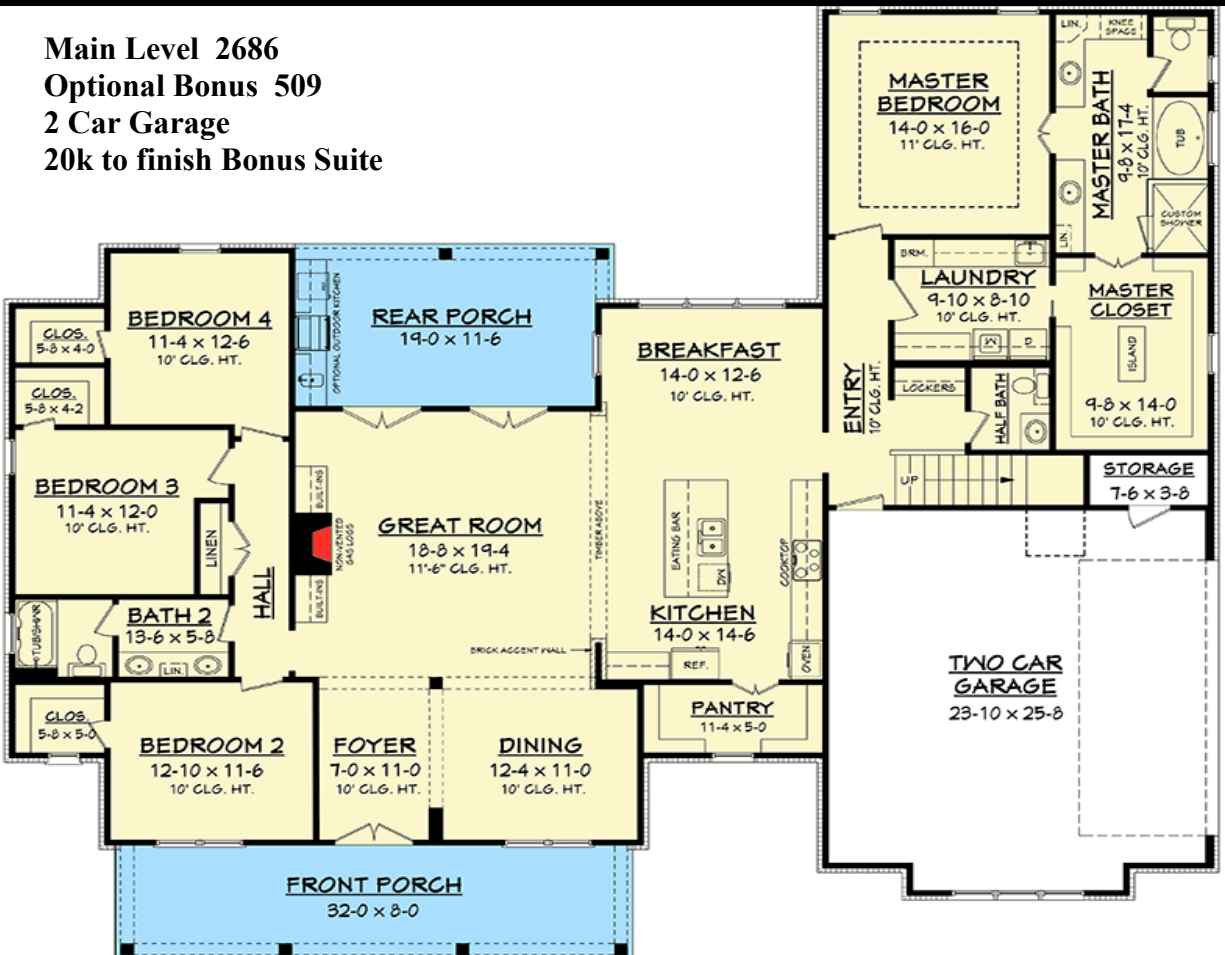
Starting At \$549,900



# Modern Farmhouse



**Main Level 2686**  
**Optional Bonus 509**  
**2 Car Garage**  
**20k to finish Bonus Suite**



**Starting at \$429,900**